



Beaufort County Public Works Stormwater Infrastructure Project Summary

Project Summary: Country Manor Road

Activity: Routine/Preventive Maintenance

Narrative Description of Project:

Completion: Jan-14

Project improved 100 L.F. of drainage system. Cleaned out 100 L.F. of roadside ditch by hand. Jetted (1) driveway pipe and (1) crossline pipe.

2014-564 / Country Manor Road	Labor Hours	Labor Cost	Equipment Cost	Material Cost	Contractor Cost	Indirect Labor	Total Cost
AUDIT / Audit Project	0.5	\$10.23	\$0.00	\$0.00	\$0.00	\$6.62	\$16.85
CLPJT / Crossline Pipe - Jetted	10.0	\$222.19	\$73.72	\$27.42	\$0.00	\$148.50	\$471.83
ONJV / Onsite Job Visit	2.0	\$59.68	\$7.24	\$2.87	\$0.00	\$36.46	\$106.25
PRRECON / Project Reconnaissance	1.0	\$44.27	\$3.62	\$2.87	\$0.00	\$33.96	\$84.72
2014-564 / Country Manor Road Sub Total	13.5	\$336.37	\$84.58	\$33.16	\$0.00	\$225.54	\$679.64
Grand Total	13.5	\$336.37	\$84.58	\$33.16	\$0.00	\$225.54	\$679.64

Before



During



After



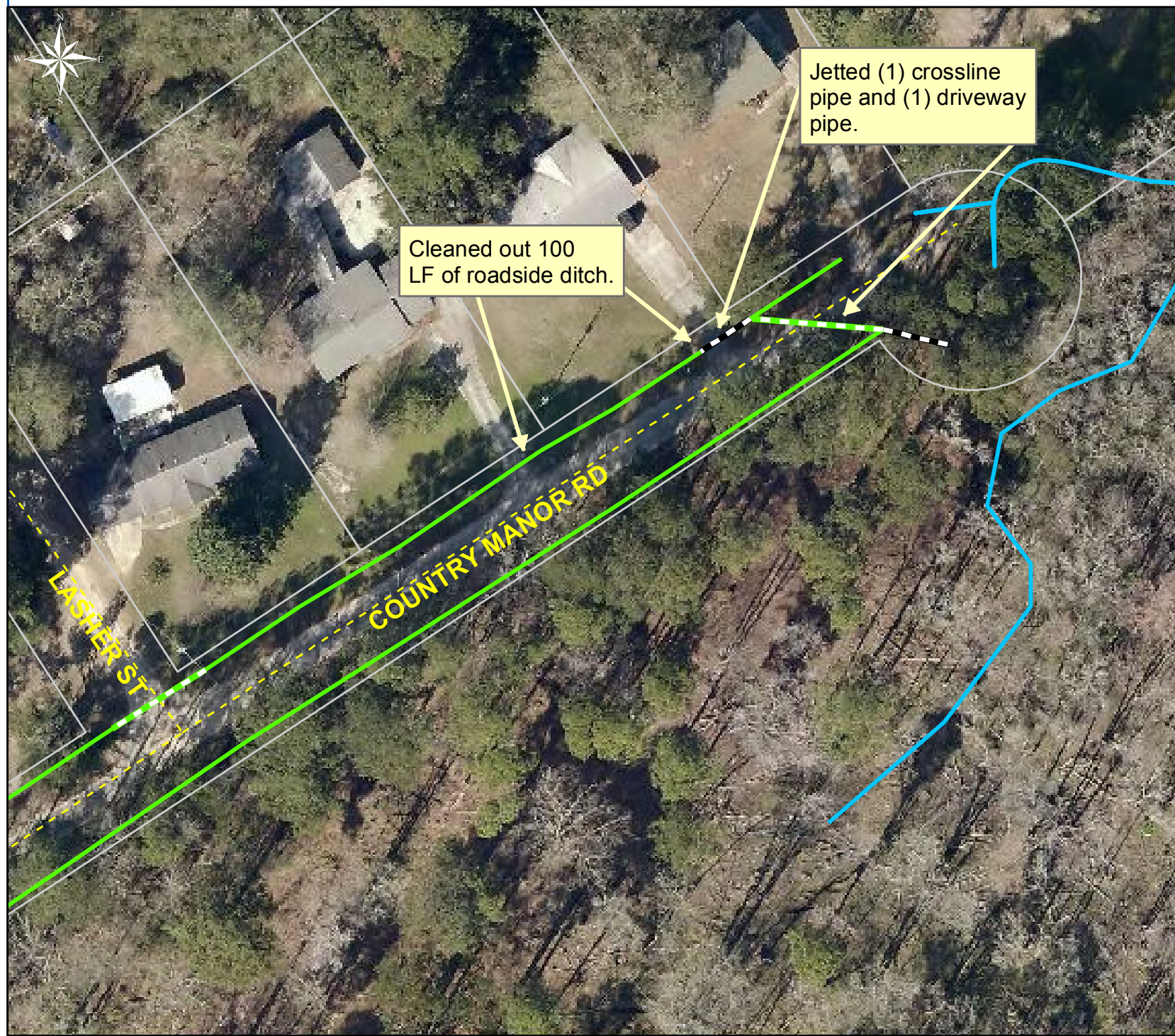
Project: Country Manor Road

Activity: Routine/ Preventive Maintenance

Project #: 2014-564

Township: Port Royal Island

Completed: January 2014



Cleaned out 100 LF of roadside ditch.

Jetted (1) crossline pipe and (1) driveway pipe.

Legend	
TYPE	
	River
	Creek/Stream
	River/Creek/Marsh BANK
	Channel (fka Outfall)
	Channel Pipe
	Lateral
	Lateral Pipe
	Roadside
	Roadside Pipe
	Road Pipe
	Crossline Pipe
	Driveway Pipe
	Access Pipe
	Bleeder Pipe



1 inch = 62 feet